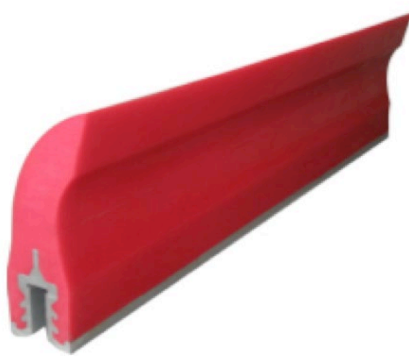
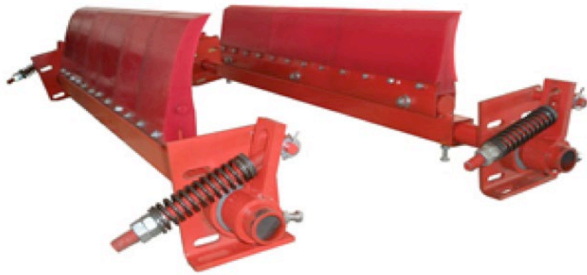


Belt Cleaning for Conveyor Belts

Primary PU Belt Cleaner



Heavy-Duty PU Blade



Standard-Duty PU Blade

Applications:

Belt Width: 500~2000mm

Belt Speed: ≤ 3.5 (m/s)

Temperature: $-40\sim 90^{\circ}\text{C}$

Material Humidity: $\leq 15\%$

Secondary PU Belt Cleaner



S-PU Secondary Polyurethane Belt Cleaner can be mounted in any secondary cleaning position -- usually about 100mm from where the belt leaves the head pulley.

The secondary cleaner, used together with the primary cleaner, has a self-adjusting spring tensioner system to maintain close contact with the belt without damaging the belt and achieve good cleaning results.

V-Plough Belt Cleaner (Return Belt Cleaner)



Features:

Special polyurethane blade

Low friction coefficient.

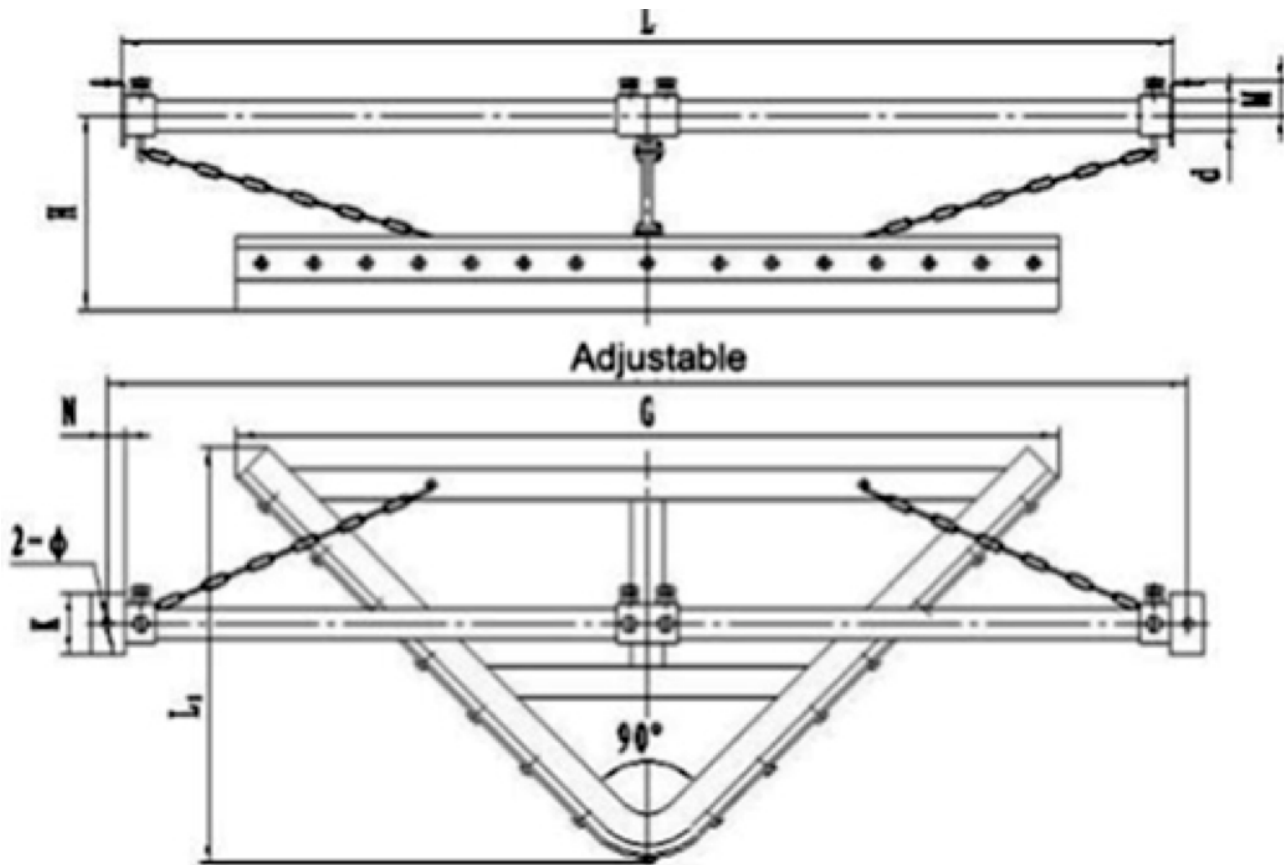
Anti-corrosion.

Without damaging the belt.

American Metric® Corporation
52 Metric Road * Laurens, S.C. 29360 USA * Tel No. (864)876-2011 * www.Ametric.com
engineering@ametric.com

Simple structure.

Easy-to-maintenance.



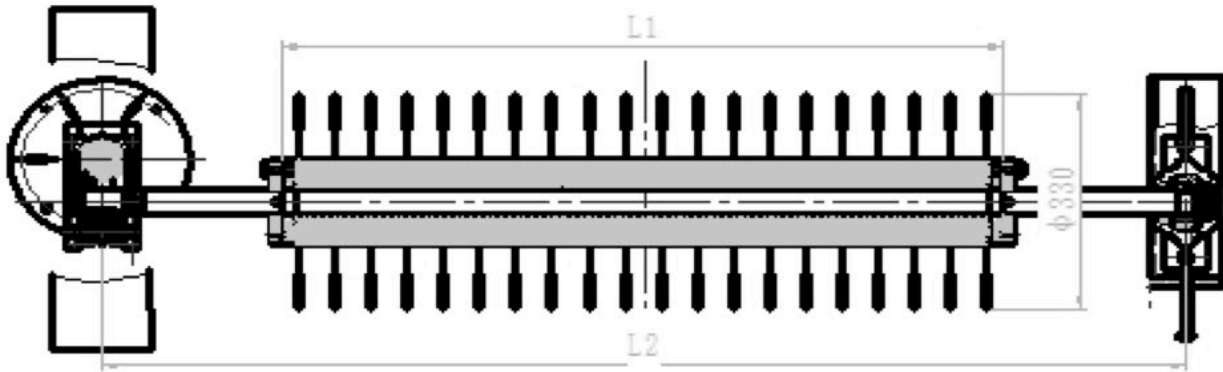
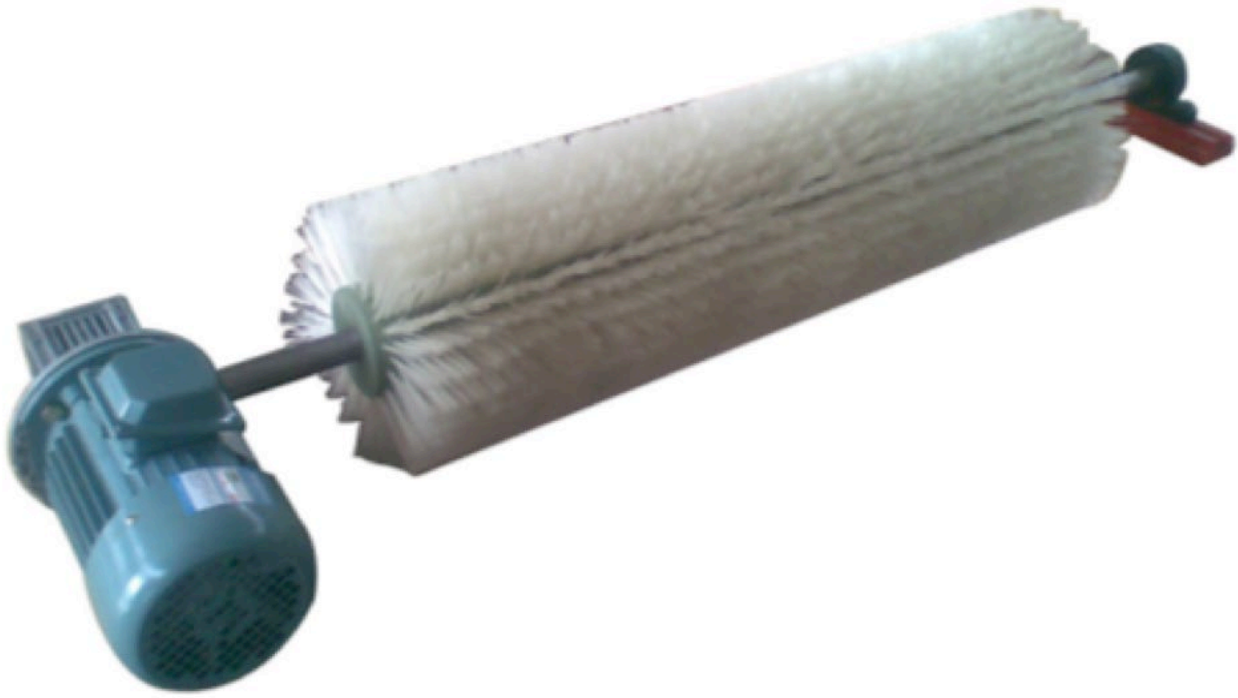
Motorized Brush Belt Cleaner

Application:

Belt Width: 650~1400(mm)

Material humidity: $\leq 5\%$

Applicable for patterned belt or flat face conveyor belt.



American Metric® Corporation
52 Metric Road * Laurens, S.C. 29360 USA * Tel No. (864)876-2011 * www.Ametric.com
engineering@ametric.com